

LEVER VALVES / VALVOLE COMANDO A LEVA

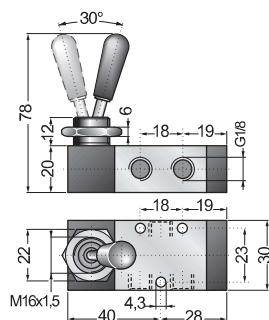
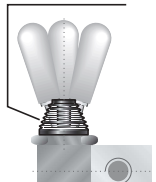
VALVE / VALVOLA 3/2

PORT CONNECTION G1/8 - LEVER VALVE
CONNESSIONI G1/8 - COMANDO MANUALE A LEVA

VCML32..8

on request bellow protection
a richiesta soffietto di protezione

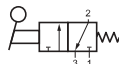
VCML ... BP



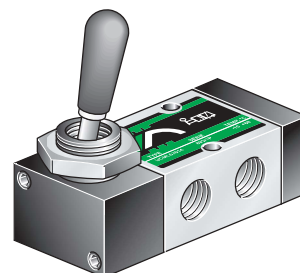
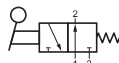
VCML32018



VCML326M8



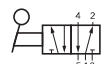
VCML329M8



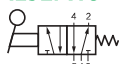
Available with rubber bellow protection
Disponibile con soffietto di protezione

VALVE / VALVOLA 5/2 - 5/3

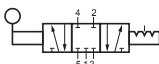
VCML52018



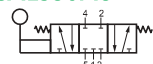
VCML52M18



VCML53618



VCML536M8



VCML53918

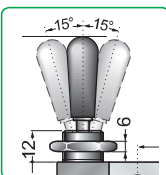


VCML539M8



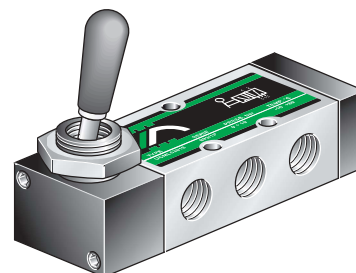
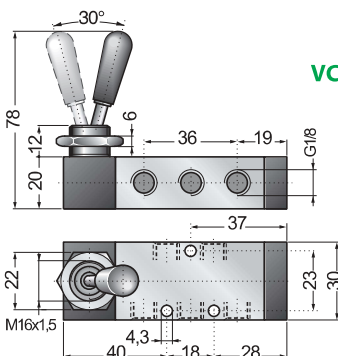
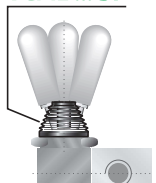
PORT CONNECTION G1/8 - LEVER VALVE
CONNESSIONI G1/8 - COMANDO MANUALE A LEVA

VCML5 ... 8



on request bellow protection
a richiesta soffietto di protezione

VCML ... BP



Available with rubber bellow protection
Disponibile con soffietto di protezione

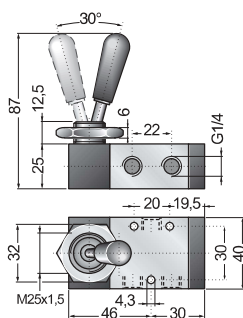
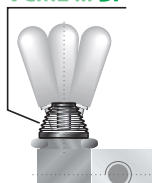
VALVE / VALVOLA 3/2

PORT CONNECTION G1/4 - LEVER VALVE
CONNESSIONI G1/4 - COMANDO MANUALE A LEVA

VCML32..4

on request bellow protection
a richiesta soffietto di protezione

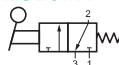
VCML ... BP



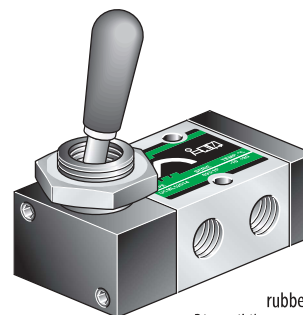
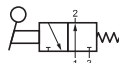
VCML32014



VCML326M4



VCML329M4



Available with
rubber bellow protection
Disponibile con soffietto di protezione

VALVE / VALVOLA 5/2 - 5/3

VCML52014



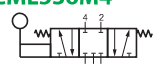
VCML52M14



VCML53614



VCML536M4



VCML53914

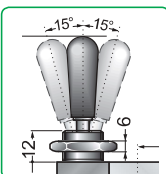


VCML539M4



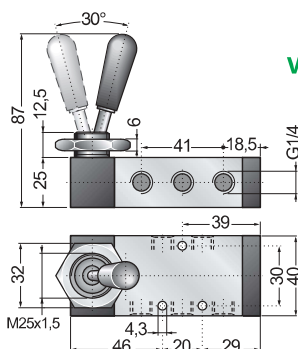
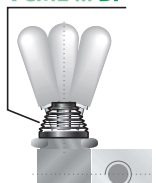
PORT CONNECTION G1/4 - LEVER VALVE
CONNESSIONI G1/4 - COMANDO MANUALE A LEVA

VCML5 ... 4



on request bellow protection
a richiesta soffietto di protezione

VCML ... BP



Available with rubber bellow protection
Disponibile con soffietto di protezione



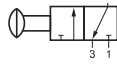
BUTTON VALVES / VALVOLE COMAND

VCMT32..8

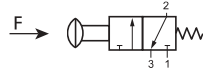
PORT CONNECTION G1
CONNESSIONI G1/8 - G



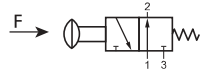
VCN



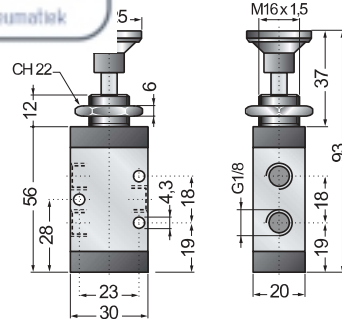
VCMT326M8



VCMT329M8



F min = 20N
F max = 40N

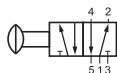


VCMT52.18

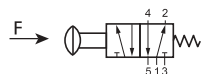
PORT CONNECTION G1/8 - BUTTON VALVE
CONNESSIONI G1/8 - COMANDO A TIRETTO

VALVE / VALVOLA 5/2

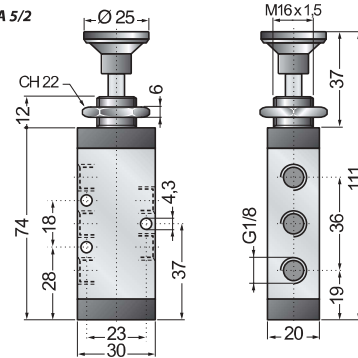
VCMT52018



VCMT52M18



F min = 20N
F max = 40N

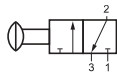


VCMT32..4

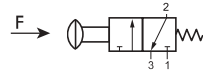
PORT CONNECTION G1/4 - BUTTON VALVE
CONNESSIONI G1/4 - COMANDO A TIRETTO

VALVE / VALVOLA 3/2

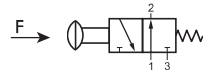
VCMT32014



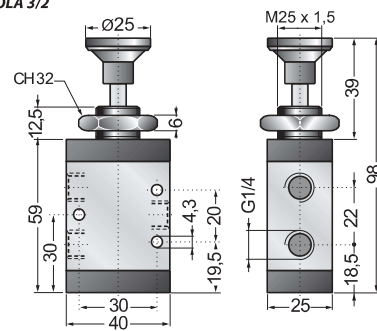
VCMT326M4



VCMT329M4



F min = 40N
F max = 60N

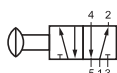


VCMT52.14

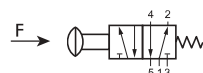
PORT CONNECTION G1/4 - BUTTON VALVE
CONNESSIONI G1/4 - COMANDO A TIRETTO

VALVE / VALVOLA 5/2

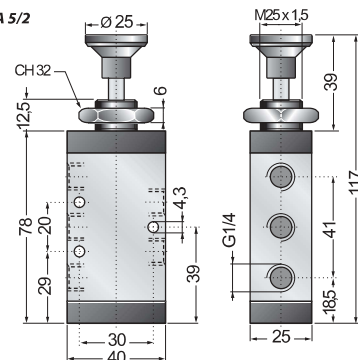
VCMT52014



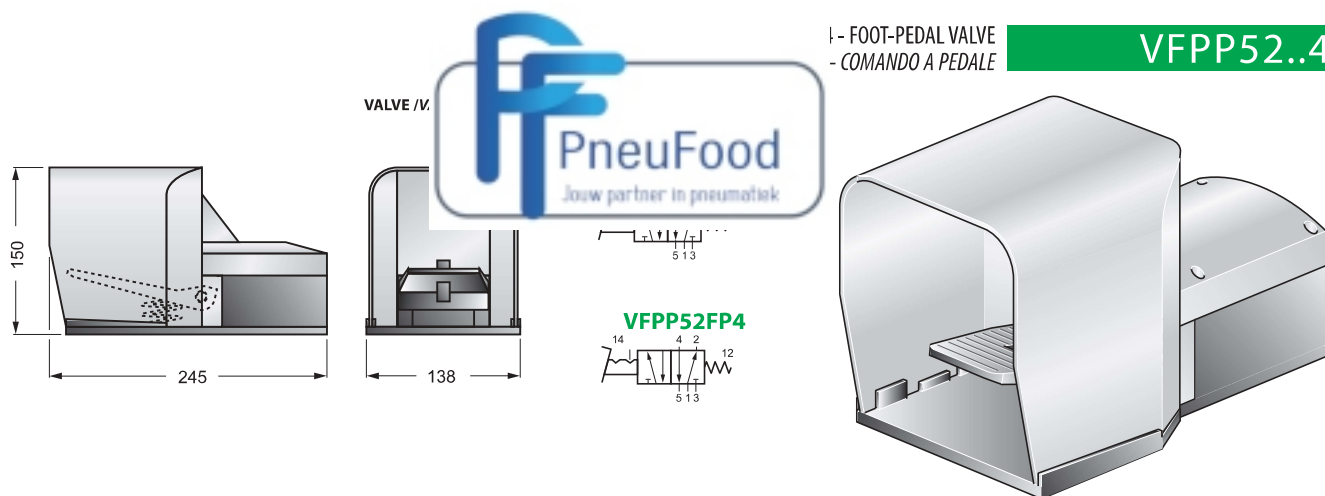
VCMT52M14



F min = 40N
F max = 60N

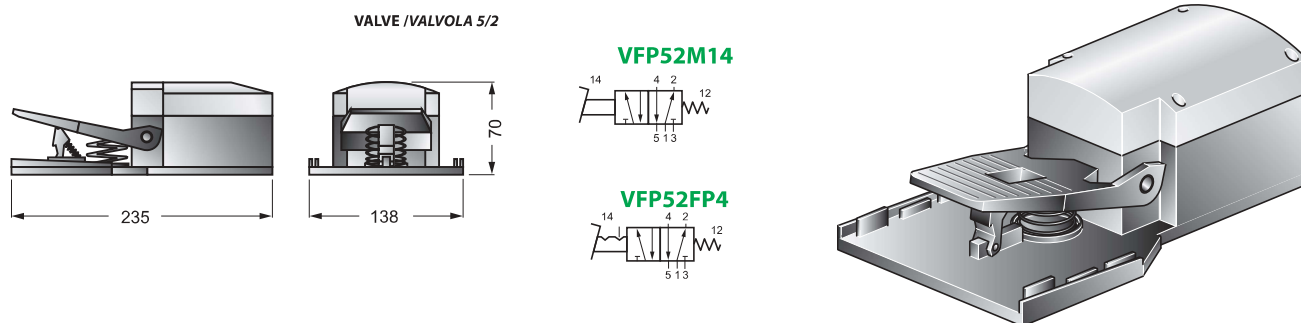


FOOT-PEDAL VALVES / VALVOLE COMANDO A PEDALE



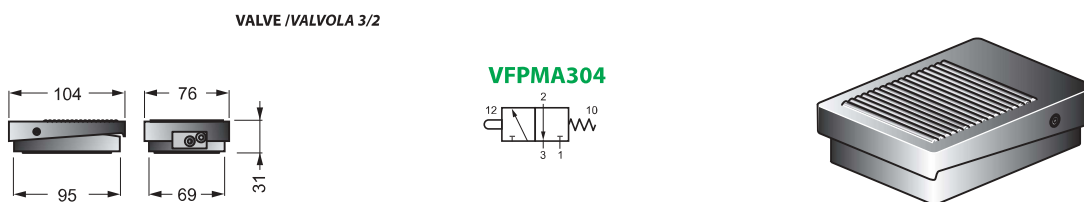
PORT CONNECTION G1/4 - FOOT-PEDAL VALVE
CONNESSIONI G1/4 - COMANDO A PEDALE

VFP52..4



PORT CONNECTION Ø4 - FOOT-PEDAL VALVE
CONNESSIONI Ø4 - COMANDO A PEDALE

VFPMA304

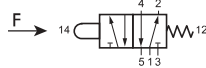


VCMS52M14

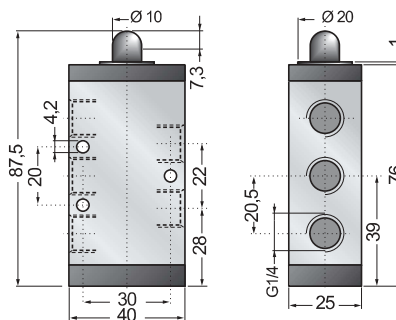
PORT CONNECTION G1/4 - CAM ACTUATED VALVE
CONNESSIONI G1/4 - COMANDO A PUNTALE



VCMS52M14



F min = 40N
F max = 60N



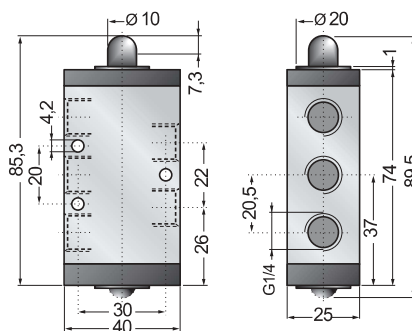
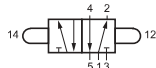
VALVE / VALVOLA 5/2

VCMS52S14

PORT CONNECTION G1/4 - CAM ACTUATED VALVE
CONNESSIONI G1/4 - COMANDO A PUNTALE



VCMS52S14



VALVE / VALVOLA 5/2

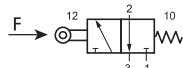
ROLLER-LEVER MECHANICAL VALVES / VALVOLE AD AZIONAMENTO MECCANICO A LEVA-RULLO

VCLR32 . M8

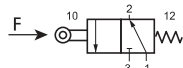
ROLLER-LEVER VALVE
VALVOLA AD AZIONAMENTO LEVA-RULLO



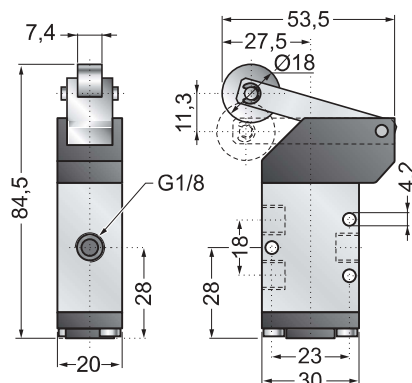
VCLR326M8



VCLR329M8



F min = 10N
F max = 20N



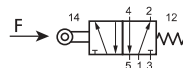
VALVE / VALVOLA 3/2

VCLR52M18

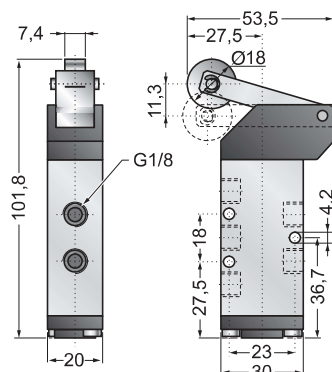
ROLLER-LEVER VALVE
VALVOLA AD AZIONAMENTO LEVA-RULLO



VCLR52M18



F min = 10N
F max = 20N

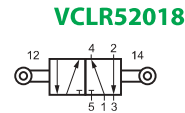
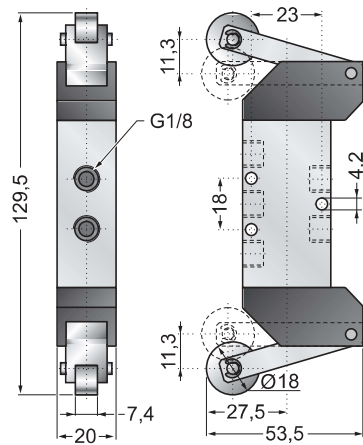


VALVE / VALVOLA 5/2

DUAL ROLLER-LEVER VALVE
VALVOLA A DOPPIO AZIONAMENTO LEVA-RULLO

VCLR52018

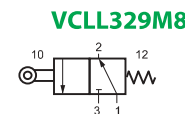
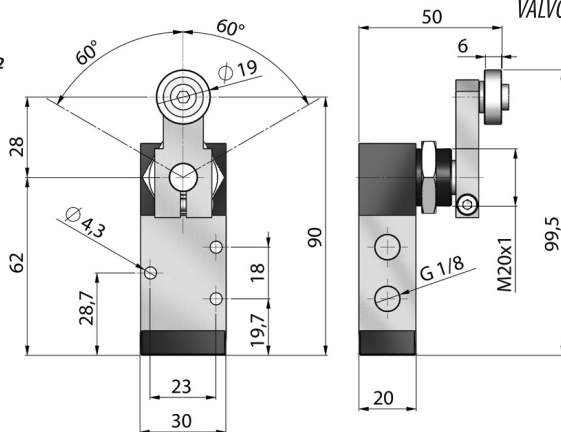
VALVE / VALVOLA 5/2



LATERAL ROLLER-LEVER VALVE
VALVOLA AD AZIONAMENTO LEVA-RULLO LATERALE

VCLL32 . M8

VALVE / VALVOLA 3/2



LATERAL ROLLER-LEVER VALVE
VALVOLA AD AZIONAMENTO LEVA-RULLO LATERALE

VCLL52M18

VALVE / VALVOLA 3/2

