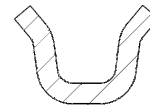


Pull ring profile



- From Ø80 - Ø300 pressure shock resistant up to 3 bar
- Ø60 and Ø315 for 1 and 2 mm wall thickness pressure shock resistant up to 1 bar
- Screw torque Ma = 25 Nm

* 2=galvanized, 3=stainless steel

Pull ring for 1 and 2 mm wall thickness

Pipe	Ø 60	Ø 80	Ø 100	Ø 120	Ø 140	Ø 150	Ø 175	Ø 200
Articel-no.	1206*383	1208*383	1210*383	1212*383	1214*383	1215*383	1217*383	1220*383
Ø B	60	80	104	124	140	154	179	204
Ø A	81	101	125	145	161	175	200	225
Weight in kg	0,3	0,31	0,33	0,36	0,37	0,39	0,42	0,45
Pipe	Ø 224	Ø 250	Ø 280	Ø 300	Ø 315	Ø 350	Ø 400	Ø 400
Articel-no.	1222*383	1225*383	1228*383	1230*383	1231*383	1235*383	1240*383	1245*383
Ø B	224	254	281	304	316	354	404	450
Ø A	245	275	302	325	337	375	425	478
Weight in kg	0,47	0,51	0,55	0,57	0,59	0,63	0,68	0,73
Pipe	Ø 500	Ø 560	Ø 630	Ø	Ø	Ø	Ø	Ø
Articel-no.	1222*383	1225*383	1228*383	-	-	-	-	-
Ø B	224	254	281	-	-	-	-	-
Ø A	245	275	302	-	-	-	-	-
Weight in kg	0,47	0,51	0,55	-	-	-	-	-

Pull ring for 3 mm wall thickness

Pipe	Ø 120	Ø 150	Ø 175	Ø 200	Ø 250	Ø 300	Ø 350	Ø 400
Articel-no.	1212*926	1215*926	1217*926	1220*926	1225*926	1230*926	1235*926	1240*926
Ø B	126	156	181	206	256	306	356	406
Ø A	151	181	206	231	281	331	381	431
Weight in kg	0,36	0,39	0,42	0,45	0,51	0,57	0,63	0,68

Denomination:

Pull-rings without sealant

Date: 03/20

Datasheet-no. 2/2

Rev. 1