

GENERAL CHARACTERISTICS:

PART NUMBER: 100041 - 101179 (EU MARKET)
 101041 - 101279 (US MARKET)
 PART NAME: WATER BLOCK

3/4" - threaded female connection in the inlet
 (North America-GHT/Europe-BSP).

3/4" - threaded male connection in the outlet
 (North America-GHT/Europe-BSP).

Vertical assembly preferred.

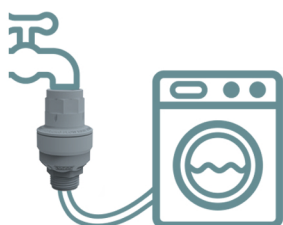
Maximum volume value adjustable through by 10 setting notches.

Every notch increases the set volume of 5 +/- 1 l
 (1.3 +/- 0.26 gal)

Food grade (WRAS, NSF)

Water Block is also available with embedded powerful magnets (part numbers 101179 EU market - 101279 US market) that inhibit limescale build-up (safe for all drinking-water appliances)

To reset the water block after an overflow detection, it is possible to use the optional reset device p/n 100245

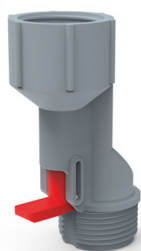


TECHNICAL DATA:

AMBIENT TEMPERATURE	2 °C ÷ 60 °C
FLUID TEMPERATURE	2 °C ÷ 70 °C
OPERATING PRESSURE	0.02 ÷ 1 MPA (0.2 ÷ 10 BAR)
FLOW RATE	FROM 2 TO 30 L/MIN (FROM 0.53 TO 7.9 GPM)
RESISTANCE TO BURSTING	> 5 MPA (> 50 BAR) AT 25°C
RATED LIFE-SPAN	> 300.000 LITRE (> 79000 GAL)

RESET DEVICE

This simple mechanical device allows the user to reset the Water Block after a flood prevention activation without the need to disassemble the water hose. The plunger activation will restart the normal functions of the connected water block.



LIMESCALE INHIBITOR

The Water Block with an integrated "limescale inhibitor" is able to protect the water system against limescale build-up while detecting the regular flow of water. Thanks to its powerful magnets, the Water Block will turn limescale molecules into non-aggregated powder to be expelled, giving protection to the heating element and water within the appliance infrastructure.

